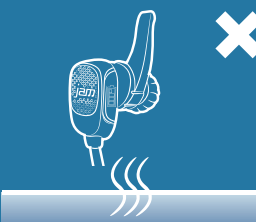
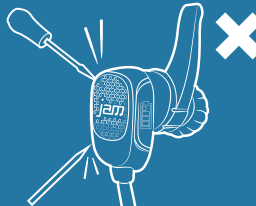
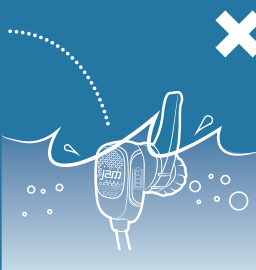
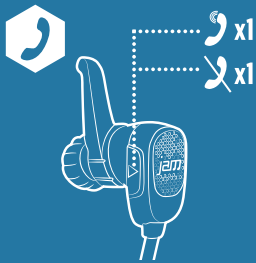
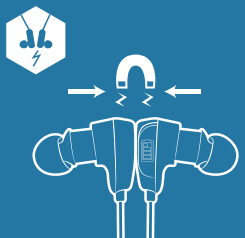
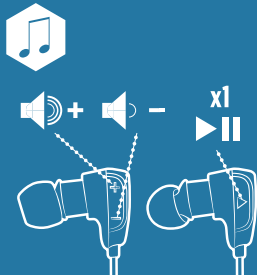
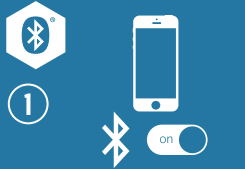
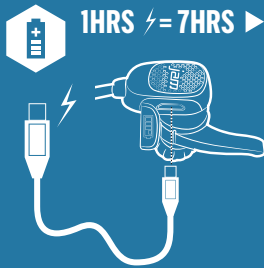


jam[®]
WIRELESS AUDIO



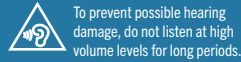
jam[®]
TRANSIT FITNESS BUDS

INSTRUCTION MANUAL



	Indicator	Status
🔊	Quick Flash BLUE	Pairing Mode
	Slow Flash BLUE	Connected

	Indicator	Status
🔋	Flashing RED	Low Battery
	Solid RED	Charging



Warning: Batteries (battery pack or batteries installed) shall not be exposed to excessive heat such as sunshine, fire or the like.

READ ALL INSTRUCTIONS BEFORE USE AND SAVE THESE INSTRUCTIONS FOR FUTURE REFERENCE.

IMPORTANT SAFEGUARDS: WHEN USING ELECTRICAL PRODUCTS, ESPECIALLY WHEN CHILDREN ARE PRESENT, BASIC SAFETY PRECAUTIONS SHOULD ALWAYS BE FOLLOWED, INCLUDING THE FOLLOWING:

WARNING: Use this appliance only for its intended use as described in this manual. Do not use attachments not recommended by JAM AUDIO. • JAM AUDIO is not liable for any damage caused to iPod/MP3 player or any other device.

To reduce the risk of burns, fire, electric shock or injury to persons: • This appliance is not intended for use by persons (including children) with reduced physical, sensory or mental capabilities, or lack of experience and knowledge, unless they have been given supervision or instruction concerning use of the appliance by a person responsible for their safety. Children should be supervised to ensure that they do not play with the appliance. • Use this appliance only for its intended use as described in this manual. **Warning:** Batteries (battery pack or batteries installed) shall not be exposed to excessive heat such as sunshine, fire or the like. Caution: Danger of explosion if battery is incorrectly replaced. Replace only with the same or equivalent type.

BATTERY REPLACEMENT

Your Jam Transit Fitness includes a rechargeable battery designed to last the lifetime of the product. In the unlikely event that you should require a replacement battery please contact Customer Services who will supply details of the warranty and out-of-warranty replacement battery service.

BATTERY DIRECTIVE

This symbol indicates that batteries must not be disposed of in the domestic waste as they contain substances which can be damaging to the environment and health. Please dispose of batteries in designated collection points.

WEEE EXPLANATION

This marking indicates that this product should not be disposed with other household wastes throughout the EU. To prevent possible harm to the environment or human health from uncontrolled waste disposal, recycle it responsibly to promote the sustainable reuse of material resources.

Hereby, HoMedics Group Ltd, declares that this audio device is in compliance with the essential requirements and other relevant provisions of Directive 2014/53/EU. A copy of the Declaration of Conformity can be obtained from www.uk.jamaudio.com/????

2 YEAR GUARANTEE

JAM guarantees this product from defect in material and workmanship for a period of 2 years from the date of purchase, except as noted below. This JAM product guarantee does not cover damage caused by misuse or abuse; accident; the attachment of any unauthorised accessory; alteration to the product; or any other conditions whatsoever that are beyond the control of JAM. This guarantee is effective only if the product is purchased and operated in the UK / EU. A product that requires modification or adaptation to enable it to operate in any country other than the country for which it was designed, manufactured, approved and / or authorised, or repair of products damaged by these modifications is not covered under this guarantee. JAM shall not be responsible for any type of incidental, consequential or special damages.

To obtain guarantee service on your product, return the product post-paid to your local service centre along with your dated sales receipt (as proof of purchase). Please refer to 'JAM Service Centre' information leaflet for details of your local service centre. Upon receipt, JAM will repair or replace, as appropriate, your product and return it to you, post-paid. Guarantee is solely through JAM Service Centre. Service of this product by anyone other than the JAM Service Centre voids the guarantee.

This guarantee does not affect your statutory rights.

Operating frequency band: 2402 - 2480MHz
Maximum radio-frequency power transmitted: XXXXXX



IB-HXEP400EU-FULL-0217-01