

**READ ALL INSTRUCTIONS BEFORE USE. SAVE THESE INSTRUCTIONS FOR FUTURE REFERENCE.**

### **IMPORTANT SAFEGUARDS**

WHEN USING ELECTRICAL PRODUCTS, ESPECIALLY WHEN CHILDREN ARE PRESENT, BASIC SAFETY PRECAUTIONS SHOULD ALWAYS BE FOLLOWED, INCLUDING THE FOLLOWING:

- ALWAYS unplug the appliance from the electrical outlet immediately after using and before cleaning. To disconnect, turn all controls to the 'OFF' position, then remove plug from outlet.
- NEVER leave an appliance unattended when plugged in. Unplug from the mains outlet when not in use and before putting on or taking off parts or attachments.
- This appliance can be used by children aged from 8 years and above and persons with reduced physical, sensory or mental capabilities or lack of experience and knowledge if they have been given supervision or instruction concerning use of the appliance in a safe way and understand the hazards involved. Children shall not play with the appliance. Cleaning and user maintenance shall not be made by children without supervision.
- DO NOT reach for an appliance that has fallen in water or other liquids. Switch off at the mains and unplug it immediately. Keep dry – DO NOT operate in wet or moist conditions.
- NEVER insert pins or other metallic fasteners into the appliance.
- Use this appliance for the intended use as described in this booklet. DO NOT use

attachments not recommended by Jam Audio.

- NEVER operate the appliance if it has a damaged cord or plug, if it is not working properly, if it has been dropped or damaged, or dropped into water. Return it to the HoMedics Service Centre for examination and repair.
- Keep cord away from heated surfaces.
- Excessive use could lead to the product's excessive heating and shorter life. Should this occur, discontinue use and allow the unit to cool before operating.
- NEVER drop or insert any object into any opening.
- DO NOT operate where aerosol (spray) products are being used or where oxygen is being administered.
- DO NOT carry this appliance by the cord or use cord as a handle.
- DO NOT use outdoors.
- This product requires a 220-240 V AC power.
- DO NOT attempt to repair the appliance. There are no user serviceable parts. For service, send to a HoMedics Service Centre. All servicing of this appliance must be performed by authorised HoMedics service personnel only.
- Never block the air openings of the appliance or place it on a soft surface, such as a bed or couch. Keep air openings free of lint, hair etc.
- Do not place or store appliance where it can fall or be pulled into a bath or sink. Do not place in or drop into water or other liquid.
- Failure to follow the above may result in the risk of fire or injury.

### **2 YEAR GUARANTEE**

JAM guarantees this product from defect in material and workmanship for a period of 2 years from the date of purchase, except as noted below. This JAM product guarantee does not cover damage caused by misuse or abuse; accident; the attachment of any unauthorised accessory; alteration to the product; or any other conditions whatsoever that are beyond the control of JAM. This guarantee is effective only if the product is purchased and operated in the UK / EU. A product that requires modification or adaptation to enable it to operate in any country other than the country for which it was designed, manufactured, approved and / or authorised, or repair of products damaged by these modifications is not covered under this guarantee. JAM shall not be responsible for any type of incidental, consequential or special damages. Please note, the stylus cartridge is easily damaged and is NOT included in the product warranty. For replacement stylus cartridges, please contact Customer Service.

To obtain guarantee service on your product, return the product post-paid to your local service centre along with your dated sales receipt (as proof of purchase). Please refer to 'JAM Service Centre' information leaflet for details of your local service centre. Upon receipt, JAM will repair or replace, as appropriate, your product and return it to you, post-paid. Guarantee is solely through JAM Service Centre. Service of this product by anyone other than the JAM Service Centre voids the guarantee.

This guarantee does not affect your statutory rights.

#### **CUSTOMER SERVICE**

@ support@homedics.co.uk

✉ HoMedics Group Ltd, HoMedics House, Somerhill Business Park, Five Oak Green Rd, Tonbridge, Kent, TN11 0GP, UK

☎ +44 (0) 1732 378557

REGISTER YOUR PRODUCT TODAY AT [WWW.HOMEDICSGROUP.COM/REGISTER](http://WWW.HOMEDICSGROUP.COM/REGISTER)

# **jam**<sup>®</sup>

## **TURNTABLE**

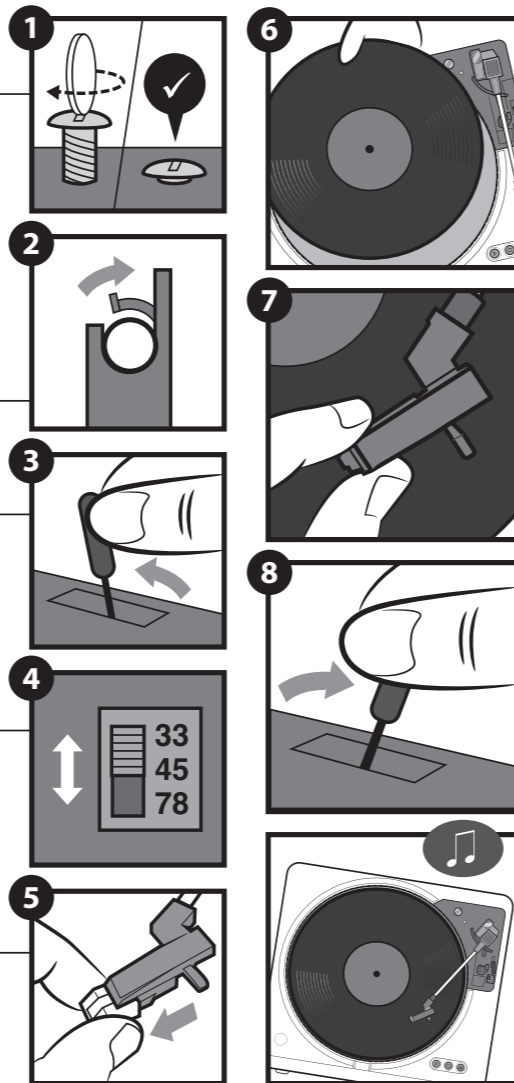
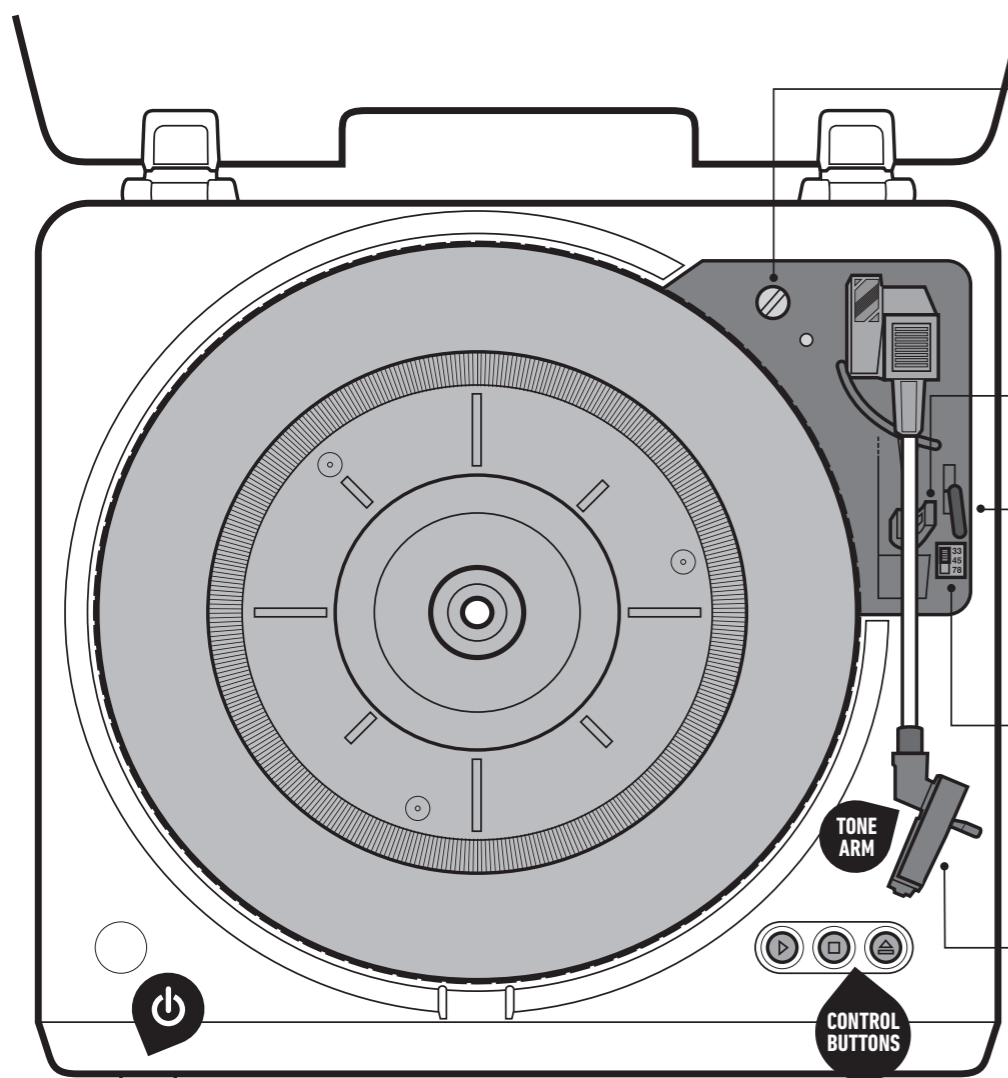


## **INSTRUCTION MANUAL**

HX-TT100



IB-HXTT100-0716-01



### WHAT'S IN THE BOX

Turntable, RCA to RCA cable, AC power cord

### USING THE TURNTABLE

When using the turntable for the first time, rotate the transportation screw clockwise with a coin or screwdriver until down. **1**

Plug the supplied power cord into the AC socket on the back of the turntable and connect to the mains. Press the power button.

Remove the tone arm lock. **2**

Push the lift handle to raise the tone arm. **3**

Select the speed - 33, 45 or 78 RPM as required **4**

Remove the white plastic needle guard **5**. Keep this in a safe place, you'll need to put it back on when you're finished.

Put a record on the turntable. **6**

Move the tone arm to the desired position on the record **7**. The record will start turning as the tone arm moves across.

Pull the lift handle forward to lower the tone arm and the record will start playing. **8**

Use the following control buttons during play:

- stop the record turning
- ▶ restart the record turning

When you have finished, either manually remove the tone arm from the record by using the lift handle **9** and return to the rest holder, or press the ▲ button, which will automatically lift and remove the tone arm. The record will stop turning at this point. Press the power button to switch off the turntable.

### CONNECTING TO SPEAKERS OR OTHER DEVICES

#### Connecting to Jam HX-TS100 Speakers

To connect the turntable to Jam HX-TS100 Speakers, use the RCA to AUX cable supplied. Connect the RCA plugs to the L and R sockets on the back of the turntable and the AUX plug to the AUX socket on the back of the lead speaker.

#### Connecting to a device with RCA input

To connect the turntable to devices with RCA input, use an RCA to RCA cable (available separately). Connect the RCA plugs on one end of the cable to the L and R sockets on the back of the turntable and the plugs at the other end to the corresponding L and R sockets on the back of the device.

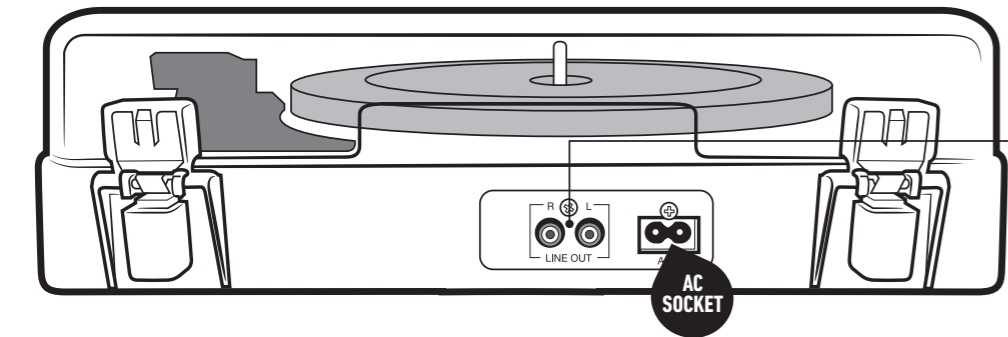
#### Connecting to a device with AUX input

To connect the turntable to a device with an AUX input, use the RCA to AUX cable supplied. Connect the RCA plugs to the L and R sockets on the back of the turntable and the AUX plug to the AUX socket on the back of the device.

RCA to AUX cable (included)

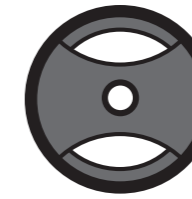


RCA to RCA cable (available separately)

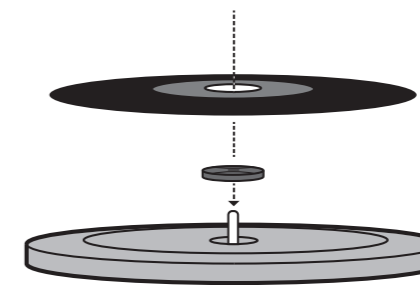


### USING THE 45 RPM ADAPTOR

The 45 RPM adaptor allows you to play 45 RPM records:



1. Place the 45 RPM adaptor over the spindle
2. Gently place your 45 RPM record onto the turntable
3. Follow the operation instructions left to play your record.



### MAINTENANCE

- DO NOT leave vinyl records on the turntable after use. Return the vinyl record to its original packaging and store.
- Return the tone arm to its original place after use and secure with tone arm lock.
- Replace the white plastic needle guard after use. Close the turntable cover to avoid dust damage.
- Unplug the power cable and other cables after use.
- Please note, the stylus cartridge can be easily damaged and is **NOT included in the product warranty**. For replacement stylus cartridges, please contact Customer Service (details on back of this leaflet).

### WEEE EXPLANATION

This marking indicates that this product should not be disposed with other household wastes throughout the EU. To prevent possible harm to the environment or human health from uncontrolled waste disposal, recycle it responsibly to promote the sustainable reuse of material resources.

### LISTEN RESPONSIBLY

To prevent possible hearing damage, do not listen at high volume levels for long periods.

